



Water Stewardship

Approach to improve private sector performance

Sami.tornikoski@wwfgreatermekong.org

World Water Day – Nay Pyi Taw, 14 March, 2017



The message is clear

Latest report
Global Water Report 2016

\$14B

Water-related impacts cost business US\$14 billion, a five-fold increase from last year.

24%

of GHG reduction activities depend on a stable supply of good quality water.

53%

of companies report that better water management is delivering GHG reductions.



(Source: CDP-Water, 2016)



Water is a bottom line issue

Income Statement

- ▶ **Drop in revenues:** disruption in operations, consumer boycotts
- ▶ **Increased costs:** increased withdrawal difficulty, higher energy costs, increased treatment costs, fines, lawsuits

Balance sheet

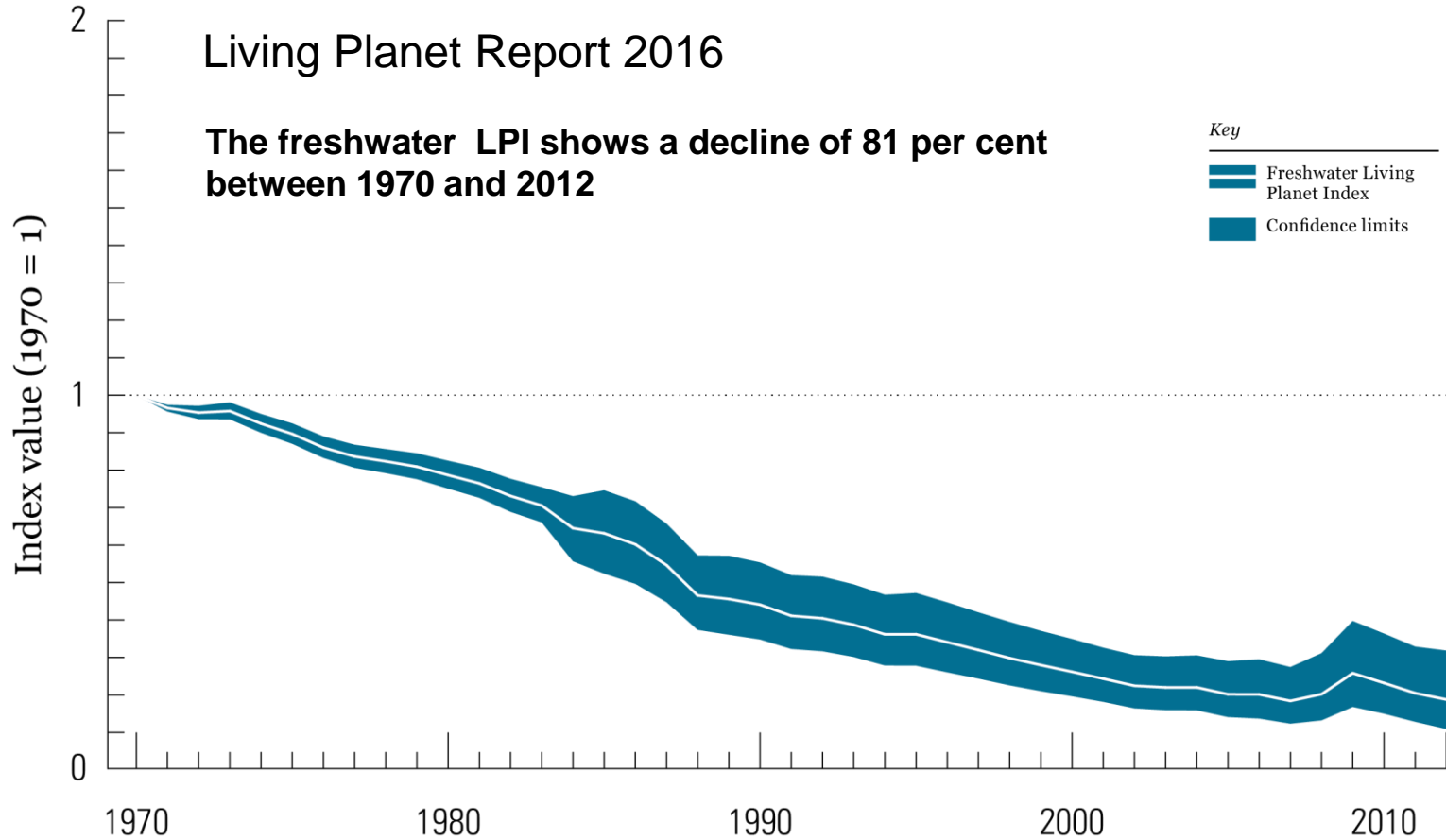
- ▶ **Impaired/stranded assets:** loss of access rights, water infrastructure, goodwill
- ▶ **Liabilities/provisions:** fines, water taxes payable, loans and bonds (inability to service)

According to WRG: ***“A 40% global shortfall in water supply is expected by 2030. Business as usual water management will put at risk US\$63 trillion or 1.5 times today’s economy... Asia will need additional 65% of water withdrawals by 2030 to cover additional needs of energy and industry.”***

(Source: Water Resource Group, World Economic Forum)



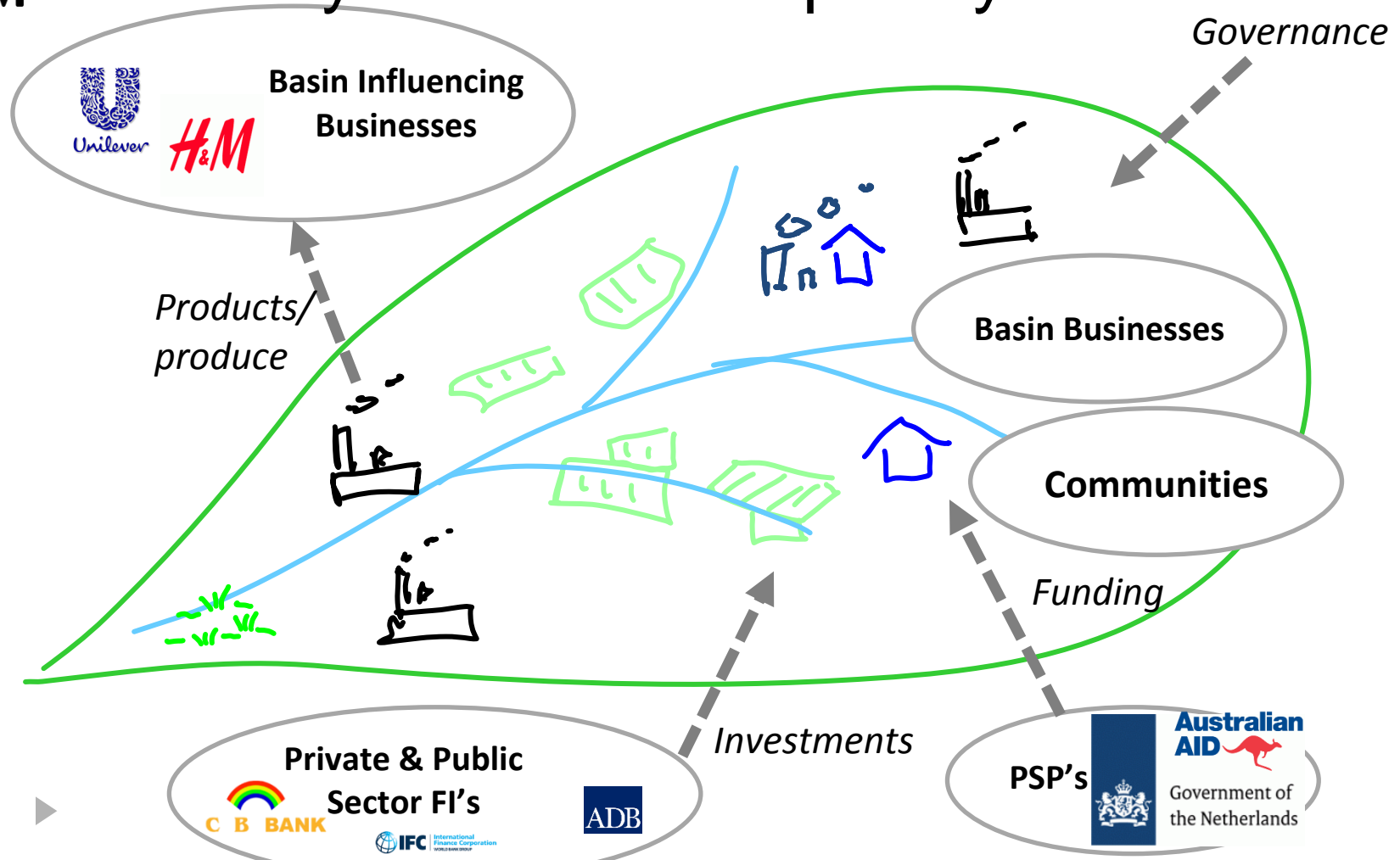
We have lot to lose in the nature



(Source: WWF/ZSL, 2016)

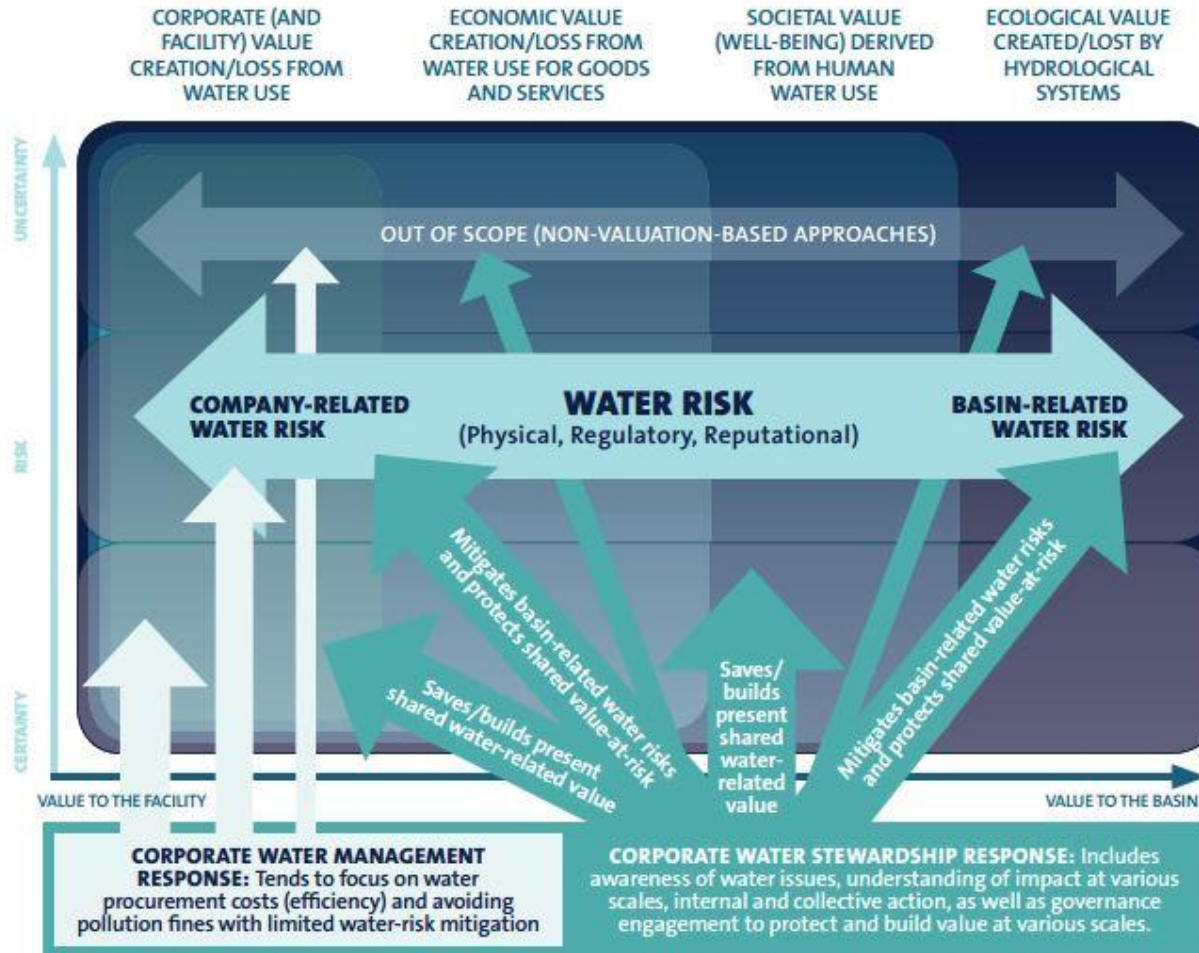


Basin dynamics – complexity in motion





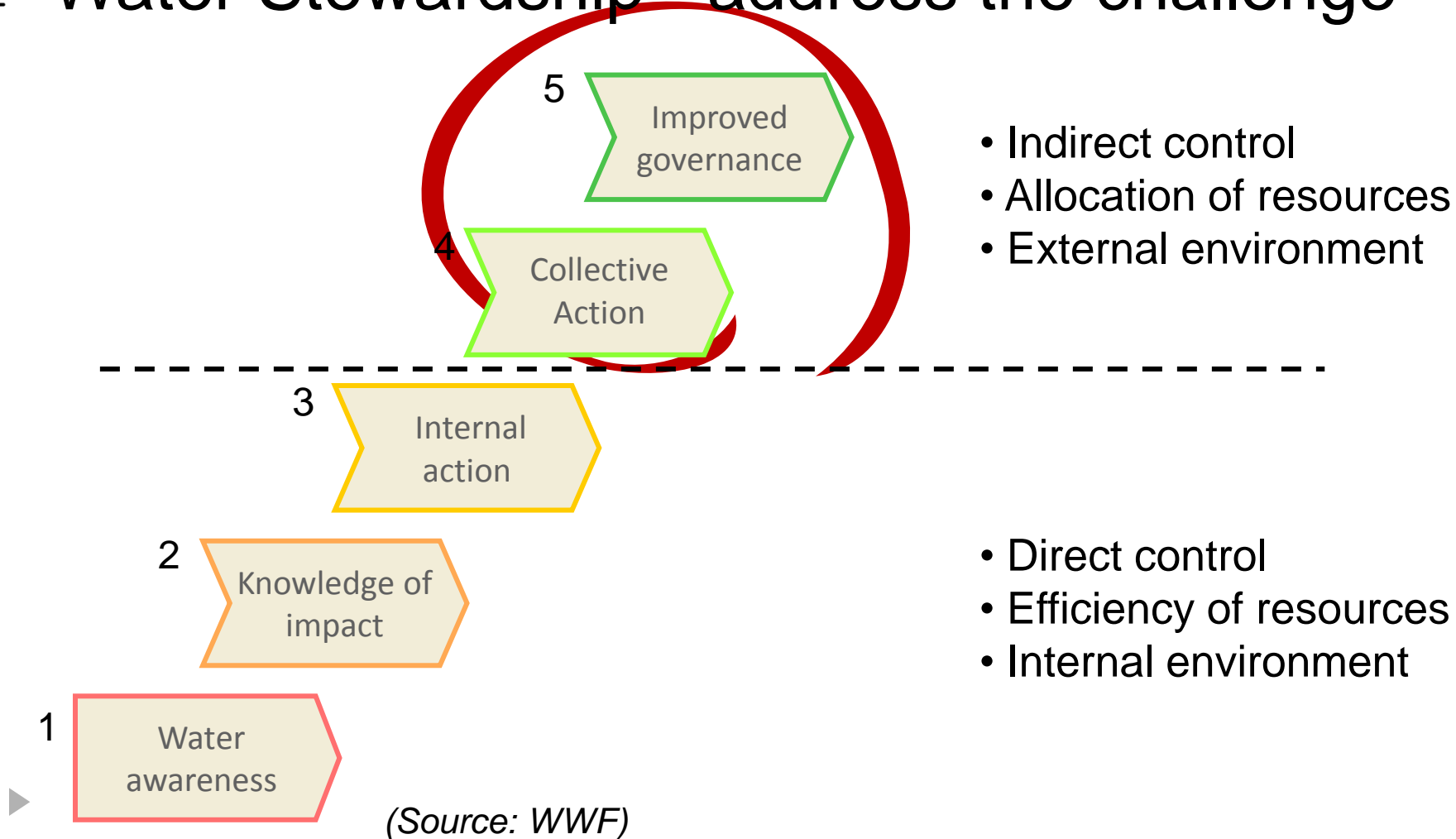
Management vs. Stewardship



(Source: WWF)



Water Stewardship - address the challenge

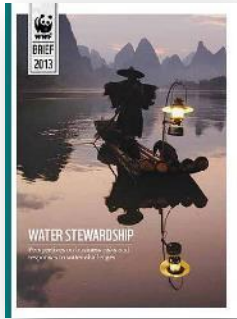




Our perception of Water Stewardship

*“Progression of increased improvement of water use and a reduction in the water-related impacts of internal and value chain operations. More importantly, it is a commitment to the **sustainable management of shared water resources in the public interest through collective action** with other businesses, governments, NGOs and communities.”*





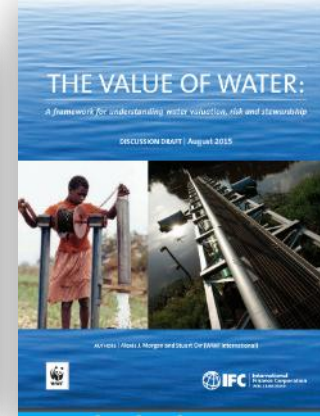
Business Risk



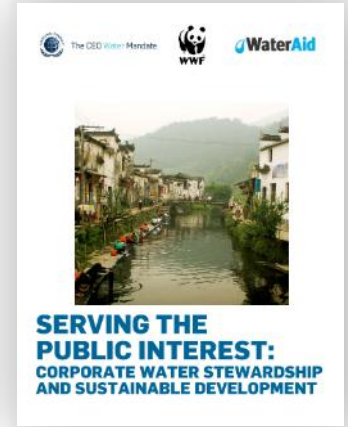
Footprinting



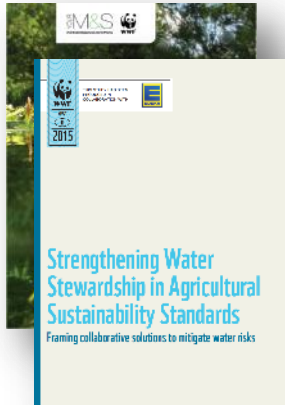
Valuation



SDGs



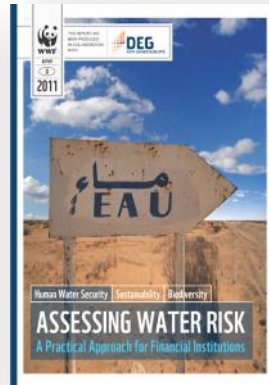
Agriculture



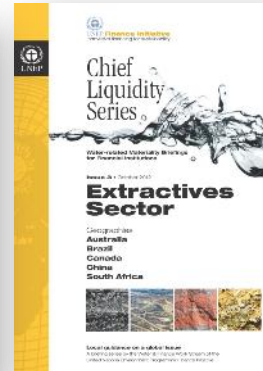
Disclosure



Investor Risk



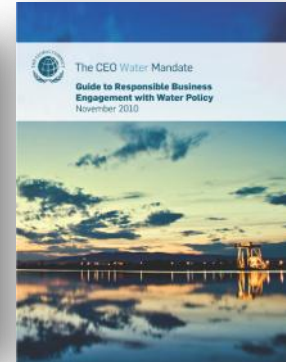
Mining Risk



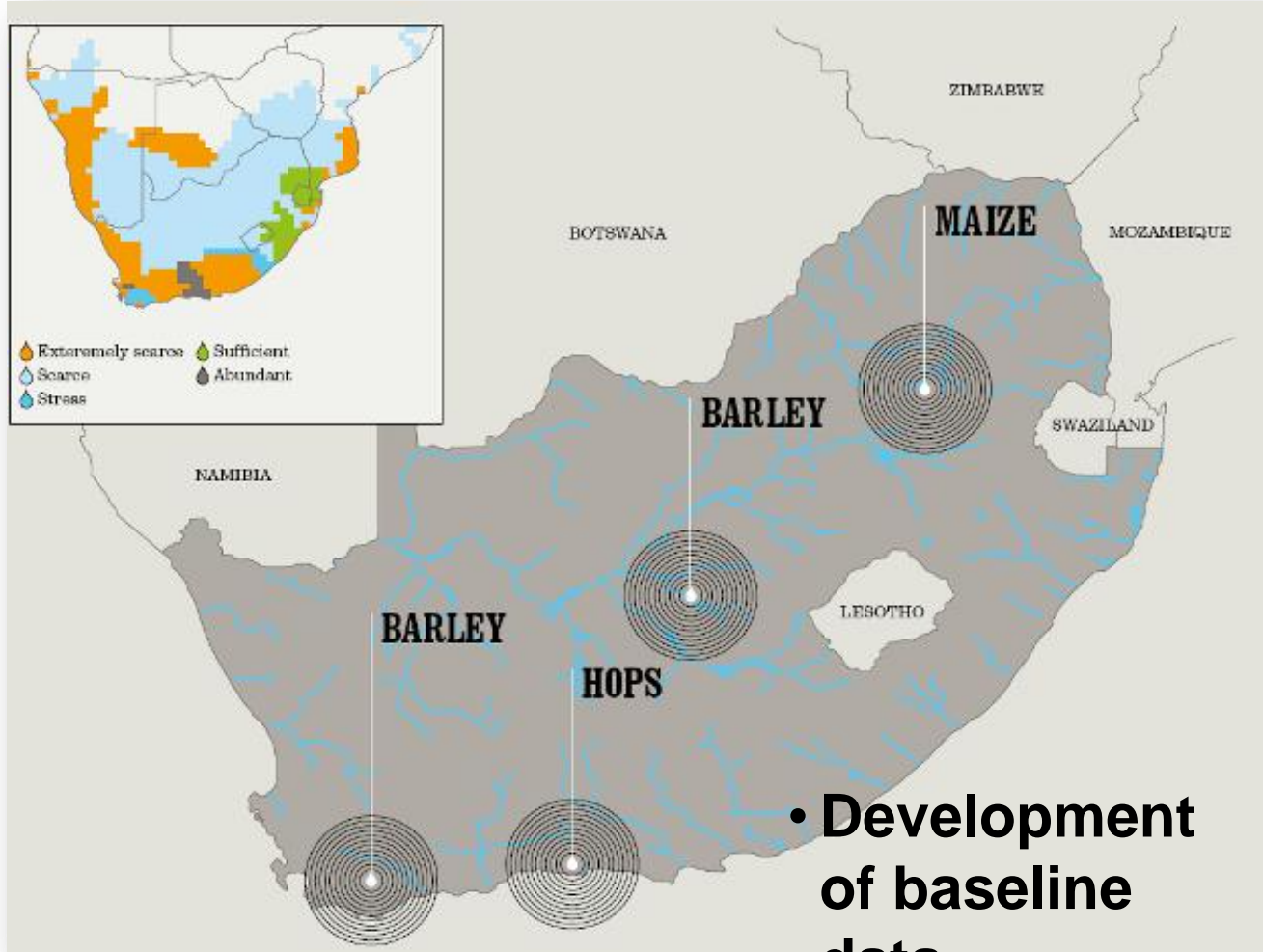
Insurance Risk



Public Policy



(Source: WWF et al.)



- **Development of baseline data**



▶ **Water Stewardship Field Trial Report from Australia**

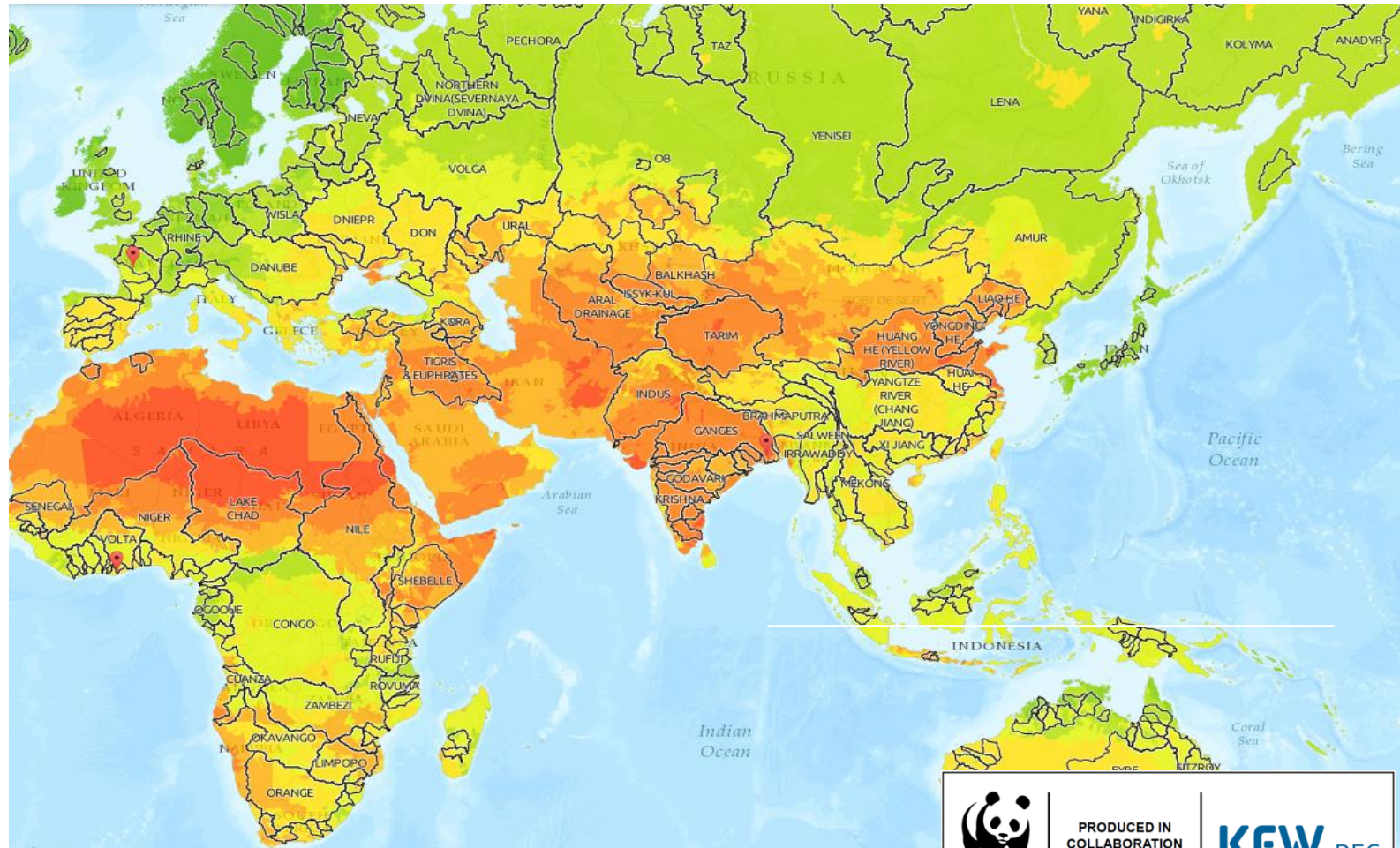
Report from Australia on water stewardship field trial in dairy industry

▶ **First certifications for European Water Stewardship (EWS)**

Coca Cola awarded first certifications for European Water Stewardship (EWS)

▶ **Beta Version of AWS Standard Released**

The Alliance for Water Stewardship is pleased to release the beta version of the AWS Standard.





Emerging concerns

Industrial zone waste water shows rising pollution

By Khin Wine Phyu Phyu | Monday, 04 January 2016

Tykkää 80 G+1 Tweet Share 4

The level of organic pollutants in waste water at the **Hlaing Tharyar** and **Shwe Pyi Thar** industrial zones over the past two years was higher than standard specifications, according to research from the Green Motherland Development Association.



80pc Industries Violating Wastewater Standards

AUTHOR: PHYU THU | 21 JAN 2015 | VOL 3 ISSUE 4

Like 4 Share Tweet Share 4



Wai Linn Kyaw/MBT
Factories are seen at Shwe Pyi Thar Industrial Zone in Yangon.



ng Tharyar industrial zone.

Myanmar Food Industry Poised for Growth: FIA Speaks to MFPEA

By FIA Staff | on 24 Feb 2014

Tweet in f + Share 4

Experts warn of groundwater depletion dangers

By Aye Sapay Phyu | Monday, 12 May 2014

Tykkää 2 G+1 0 Tweet Share 3

While some areas of Myanmar suffer from dwindling water supplies during summer, it is not unusual at this time of year to see water dripping from overflow pipes set outside high-rise buildings in Yangon.

Myanmar's growth and development

U Wai Phyo, Vice President of the AFBA Chairman for Myanmar Myanmar.

Myanmar food industry, MFPEA's achieve out of its membership with



Residents of Bago Region carry water to their homes during a drought in May 2010. Photo: Christopher Davy



Private sector context in Myanmar

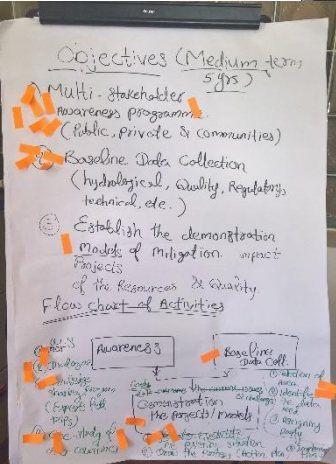
- ▶ Food & Beverage and Textiles in first focus - large SME sector and potential, challenges...
 1. Compliance with regulation
 2. Attract investment and connect to regional/international markets

- ▶ Technical solutions, capacity and access to finance as limiting factors





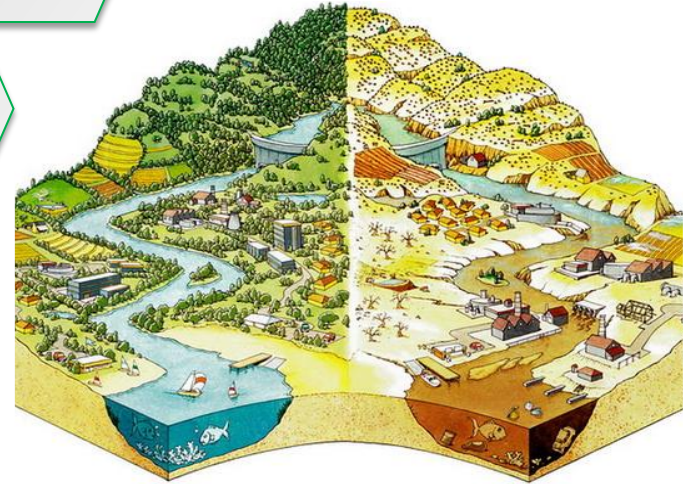
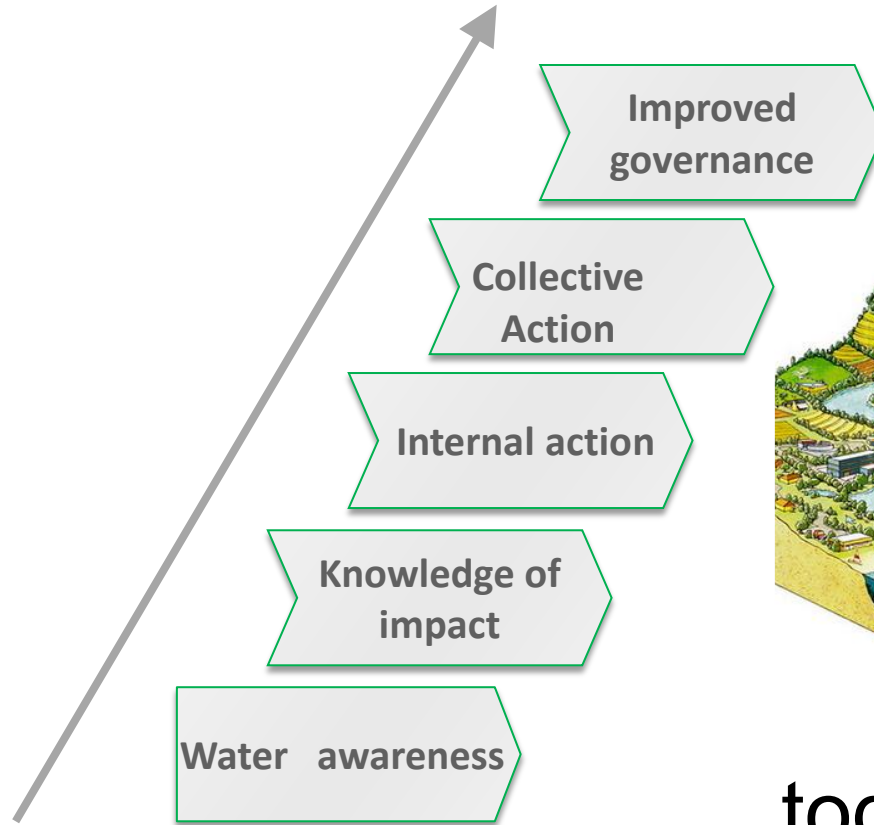
Stewardship Myanmar – Early action



- ▶ Convened industries to engage in collective dialogue
 - ▶ Water Stewardship Group
- ▶ Identify priorities and set long-term agenda
- ▶ Training and demonstration investments ongoing (water treatment, waste-to-energy, stewardship)
- ▶ Development of medium-to-large projects to leverage investment
- ▶ Training of banking sector to understand and mitigate water risk associated with investment portfolios



Join the journey towards sustainability



...together possible





“Build a future in which human lives in harmony with nature”

+100

WWF is in over 100 countries, on 6 continents

1961

WWF was founded In 1961



+5M

WWF has over 5 million supporters

+16M

WWF has over 16 million followers on Facebook, Twitter and Google+

+2,500

Active engagements with companies

